

Vortex Fans

51" and 55" sizes for air Extraction



Vortex fan line

The Vortex is Munters premium exhaust fan line. Our engineers understand the harsh environments in which Vortex fans must perform and have designed the series to optimize both performance and quality. The parts and components withstand corrosive gases from the internal environment as well as sunlight and heat from the external environment, making Vortex the benchmark for our industry.

What distinguishes the Vortex fan line as a superior choice are the premium standard features. These include the renowned Aerotech cast aluminum airfoil propeller that provides high air flow and efficiency along with durability. A fiberglass housing with stainless steel components offers corrosion resistance. A belled inlet shutter providing a smooth transition for incoming air. Aerodynamic extruded aluminum support struts, combined with high efficiency motors and quality drive components, make the Vortex series a premium product.

Optional upgrades include a remote lubrication feature, permitting fan maintenance from outside the building. The available premium efficiency motor, with heavy duty construction, will take Vortex to the next level of performance. Also available for the 51" Vortex is the new patent pending four-door Dragonfly Damper optimizing the fans spiral airflow pattern and offering a weather-tight seal for energy savings.

PRODUCT INFORMATION

Every feature of the Vortex fan line is designed to maximize performance and durability.

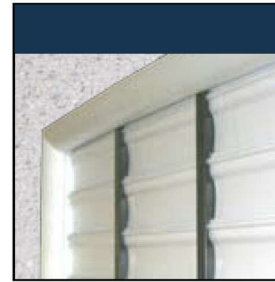
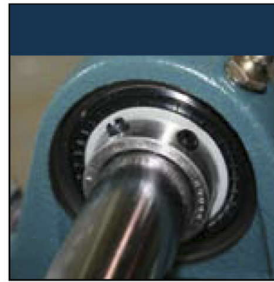
- Design awarded U.S. Patents 6,386,828; 6,616,404 and 6,953,320.
- Cast aluminum airfoil propeller
- UV resistant fiberglass housing
- Stainless steel hardware and fasteners
- High strength extruded aluminum struts
- High quality, Made in USA, pillow block greasable bearings
- Poly cone standard on 51" fans
- Greasable automotive style belt tensioner
- Three phase models compatible with variable frequency drives
- Optional premium efficiency motor
- Optional belled inlet shutter for added airflow



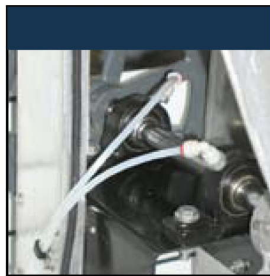
55" Vortex fans



Características Estandard



Optional Upgrades



Información del Funcionamiento: 51" Vortex, Tres Fases - 460 volts controlador del motor																
					0.0" sp		0.05" sp		0.10" sp		0.15" sp		0.20" sp			
Catalog No.	Prop Dia.	Motor HP	Prop RPM	Max. BHP	CFM	CFM Watt	CFM	CFM Watt	CFM	CFM Watt	CFM	CFM Watt	CFM	CFM Watt	AFR	BESS Lab Test
VX511F1CT	51"	1	535	1.35	28,900	26.5	27,000	23.4	25,000	20.9	22,600	18.3	19,900	15.8	0.74	11359
VX5115F1CT	51"	1.5	575	1.68	31,400	23.3	29,800	21.2	28,100	19.2	26,100	17.3	23,700	15.3	0.80	11362
VX512F1CT	51"	2	620	2.02	33,600	20.3	32,200	18.8	30,500	17.2	28,600	15.7	26,500	14.4	0.82	11363
VX5515F1CT	55"	1.5	490	1.72	32,800	22.7	30,900	20.7	28,600	18.5	26,000	16.4	23,000	14.5	0.74	11379
VX552F1CT	55"	2	540	2.37	35,400	17.6	34,100	16.5	32,400	15.3	30,800	14.3	28,300	13.1	0.83	-
VX511F3CT	51"	1	535	1.36	29,400	27.0	27,600	23.9	25,500	21.1	23,100	18.5	20,200	15.9	0.73	11366
VX5115F3CT	51"	1.5	575	1.72	31,200	23.1	29,700	21.1	27,700	19.0	25,600	17.0	23,300	15.1	0.78	11370
VX512F3CT	51"	2	630	2.13	34,100	20.1	32,700	18.6	31,200	17.2	29,500	15.7	27,800	14.5	0.85	11371
VX5515F3CT	55"	1.5	490	1.80	33,000	22.5	31,200	20.6	28,900	18.5	26,600	16.6	23,900	14.8	0.77	10154
VX552F3CT	55"	2	545	2.35	36,800	18.8	35,300	17.7	33,400	16.3	31,400	15.0	29,100	13.8	0.82	10150
Información del Funcionamiento: 55" Vortex, Tres Fases - 460 volts controlador del motor																
					0.0" sp		0.05" sp		0.10" sp		0.15" sp		0.20" sp			
Catalog No.	Prop Dia.	Motor HP	Prop RPM	Max. BHP	CFM	CFM Watt	CFM	CFM Watt	CFM	CFM Watt	CFM	CFM Watt	CFM	CFM Watt	AFR	BESS Lab Test
VX511F1CP	51"	1	535	1.36	27,800	24.8	26,000	22.2	24,000	19.9	21,600	17.4	18,600	14.7	0.72	11360
VX5115F1CP	51"	1.5	575	1.68	30,500	21.7	29,100	20.0	27,200	18.2	25,100	16.5	22,900	14.8	0.79	11361
VX512F1CP	51"	2	620	2.05	32,700	19.3	31,200	17.7	29,500	16.3	27,700	15.0	25,600	13.7	0.82	11364
VX5515F1CP	55"	1.5	490	1.76	31,400	21.1	29,600	19.2	27,700	17.5	25,300	15.8	22,200	13.7	0.75	-
VX552F1CP	55"	2	540	2.39	33,900	16.9	32,600	15.7	31,100	14.7	29,400	13.7	27,200	12.5	0.83	-
VX511F3CP	51"	1	535	1.37	28,500	25.2	26,700	22.6	24,700	20.2	22,100	17.6	18,700	14.6	0.70	11367
VX5115F3CP	51"	1.5	575	1.72	30,300	21.8	28,800	20.0	27,000	18.2	24,900	16.4	22,600	14.6	0.78	11369
VX512F3CP	51"	2	630	2.15	33,200	19.1	31,900	17.7	30,400	16.4	28,800	15.2	26,900	13.9	0.84	11372
VX5515F3CP	55"	1.5	490	1.81	31,700	21.6	29,900	19.8	28,000	17.9	25,700	16.1	22,900	14.1	0.77	10152
VX552F3CP	55"	2	545	2.36	35,200	18.1	33,700	16.8	32,100	15.7	30,000	14.4	28,000	13.2	0.83	10148



Instalaciones de Alta Tecnología
www.sumainternacional.com

Guadalajara:
Volcán Parícutín 6522,
Guadalajara, 45070, Jalisco
Tel. 52(33)3627-4585

Mérida:
Calle 80 533,
Col. Dzununcan
Mérida, 97315, Yucatán
Tel. 52(999) 252-9473

Hermosillo:
Cda. De la Plata 117
Col. Valle Bonito
Hermosillo, 82246, Sonora
Tel. 52(662) 311-5343

ventas@sumainternacional.com

